

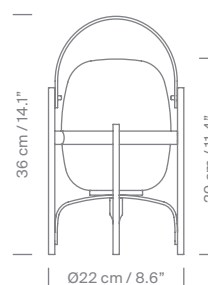


SANTA & COLE

Cestita Batería

Miguel Milá, 2017
Table lamp

Cestita Batería is the latest member in the Cesta family: a portable, wireless version. As with all of Milá's objects, Cestita, designed in 1962, strikes a balance between rational functionalism and the legacy of local artisan creation. With this new version, technology helps to enhance its features, maintaining the warmth that is characteristic of the family.



General Description

Cherry wood structure.
White opal glass lampshade.
Lithium battery.
Range: 5h on high power /
10h on medium power /
15h on low power.
Battery charging time: 5h

Light source

LED: 3 W .
Light source included
Suitable for indoor use.

Input voltage: 90 ~ 305 Vac. 100,
120, 230 Vac. (50 Hz / 60 Hz).
Según destino.
Output voltage: 3,7V. 2600mAh

Aproximate weight (unpacked)

1,7 kg / 3.7 lb

Regulations

CE
IP 20

UNE-EN 60598
UNE-EN 55015
UNE-EN 60529



Dry location only
UL-153
E-352592

Maintenance

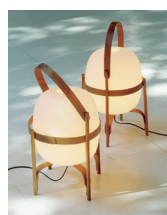
Clean with a smooth cloth. Do not use ammonia, solvents or abrasive cleaning products.

Others

The lamp is delivered in one package.
The assembly instructions are delivered with the product.

Collection

Table lamps



Cesta



Cestita



Cesta Metálica



Cestita Metálica

Wall lamps



Wally