

MESH

Design Francisco Gomez Paz, 2015

LUCE
PLAN

Type: Suspension

Light source: LED 65W 2700K
3252 lm (delivered)
Dimmable by wall control




EEL: A

Product use: Indoor

Materials: Structure in steel, lenses in polycarbonate

Colors: Black

Description: A suspension lamp offering multiple lighting scenarios for personalized aesthetic and functional performance. Based on experimentation with the potential of LEDs, a technology that permits separation into very small units, Mesh is a dramatic and highly innovative project.

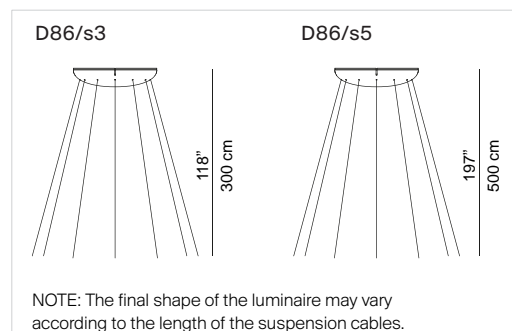
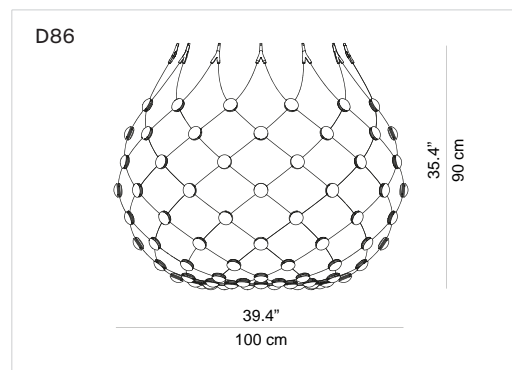
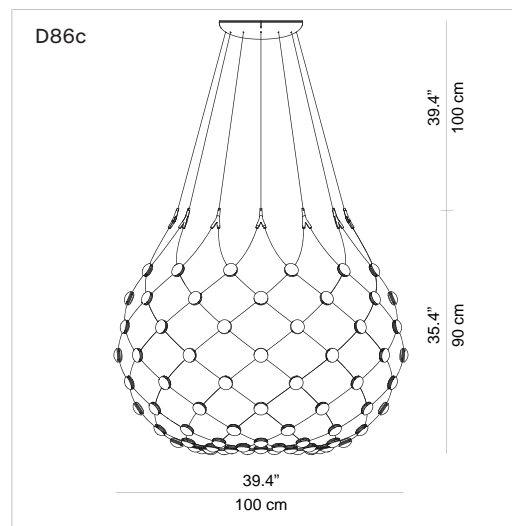
Insulation class:   

Reference code: Structure
D86c 1D860C000001 complete version
D86 1D8600000001 body

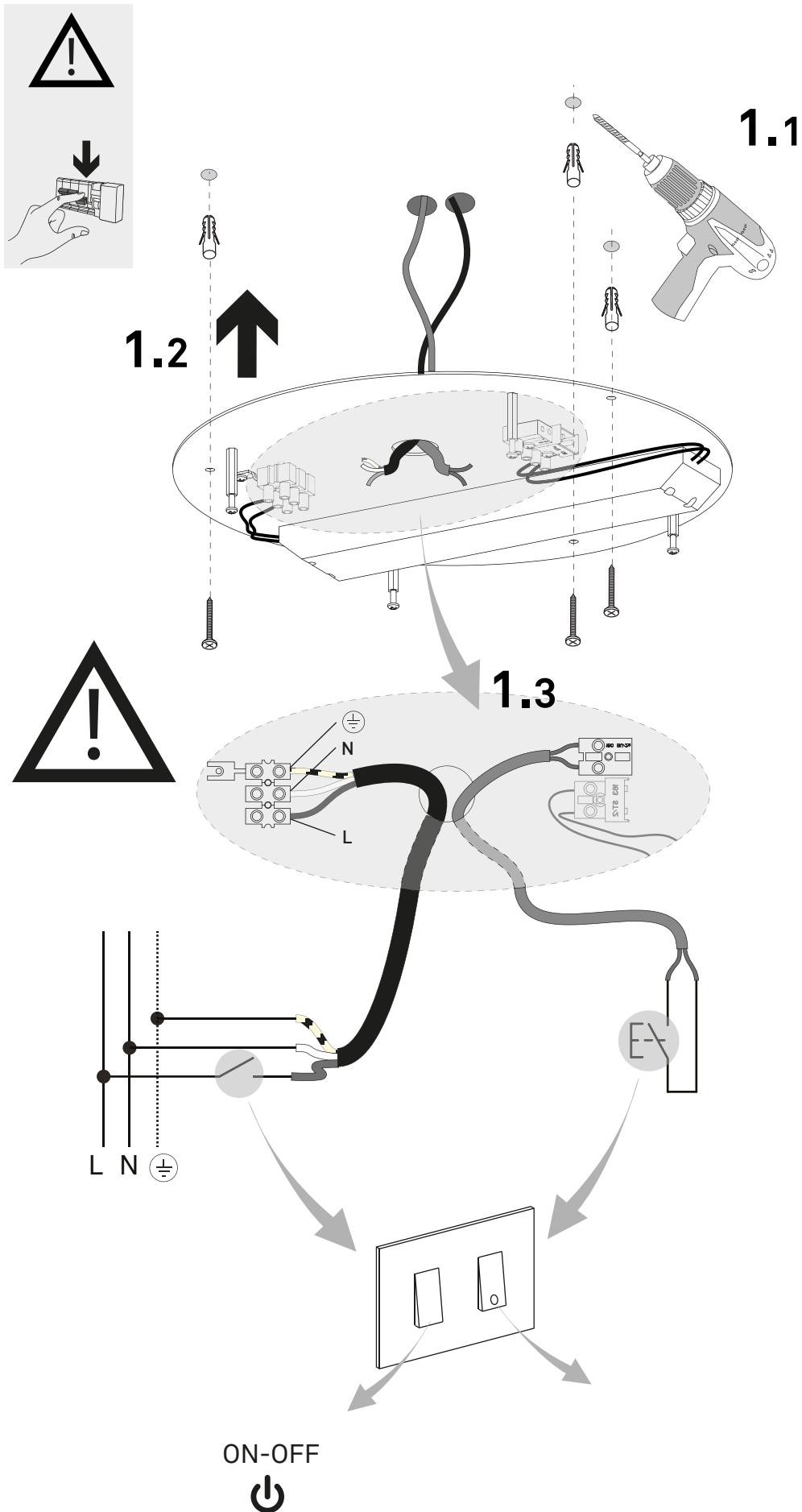
Suspension Kit
D86/s3 1D860/S30002 suspension kit 3m
D86/s5 1D860/S50002 suspension kit 5m



SCENARIOS

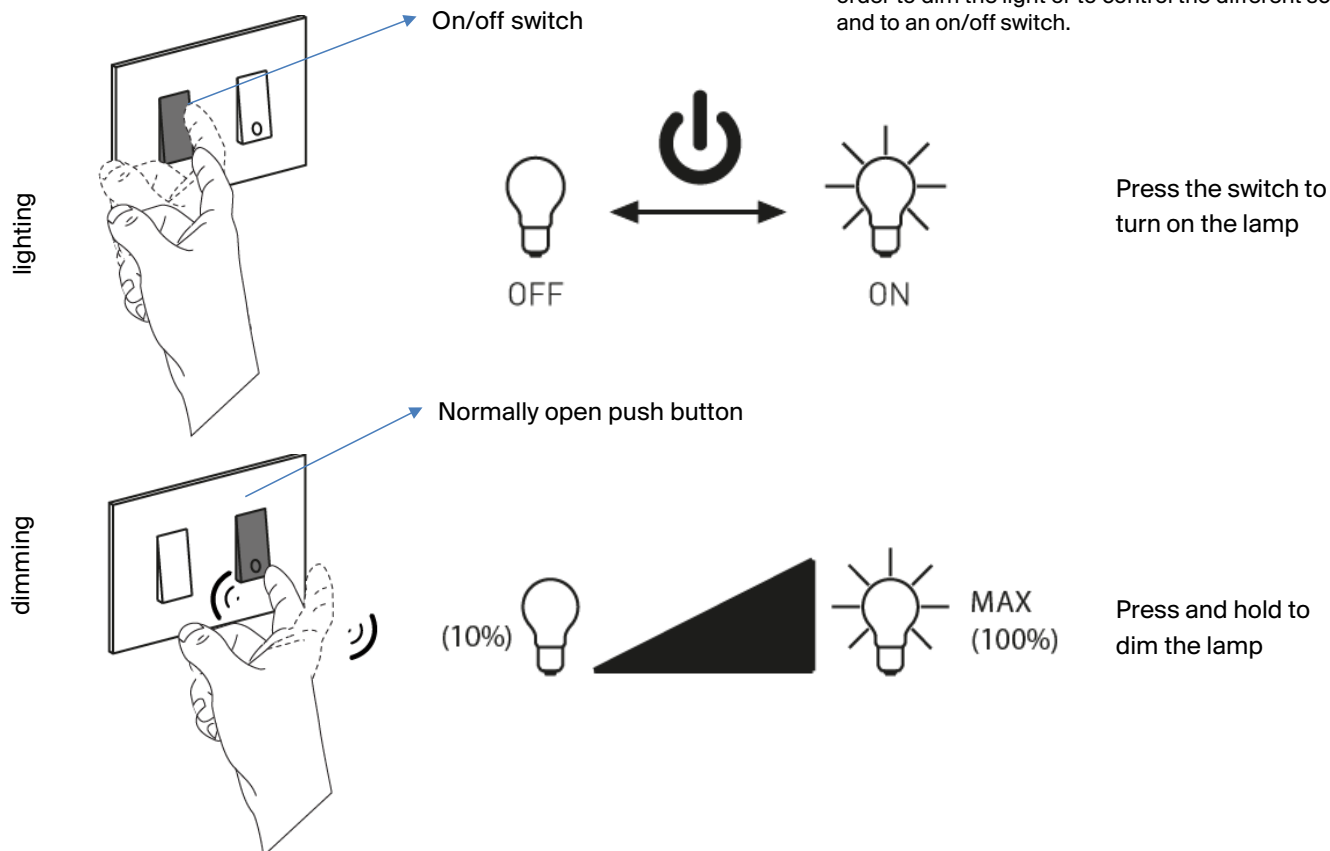


HOW TO INSTALL



HOW IT WORKS

Mesh is controlled by a dedicated electronic board which is located in the ceiling rose. The board needs to be connected to a normally open push button in order to dim the light or to control the different scenes, and to an on/off switch.



HOW IT WORKS

choose the scenario

PRESET SCENARIO

